

COVID-19

Impact on Substance Use Treatment

Community Presentation
March 26, 2020

Presenter

David de Gijzel, MD, MSc, MPH

Medical Director - Better Life Partners

Section of Infectious Disease - Dartmouth-Hitchcock Medical Center

Assistant Professor - Geisel School of Medicine, Dartmouth

No conflicts of interest

Aim

Focus on impact of COVID-19 on people who use drugs, substance use treatment providers, organizations and staff

Agenda

- Update on pandemic
- Public Health response
- Changes in care delivery and legislation
- Considerations for people with SUD
- Informational resources

Update on the pandemic

No good news



Total Confirmed

69,197

Confirmed Cases by Country/Region/Sovereignty

81,782 China

74,386 Italy

69,197 US

56,188 Spain

39,502 Germany

29,406 Iran

25,604 France

11,125 Switzerland

9,642 United Kingdom

9,241 Korea, South

6,440 Netherlands

6,235 Belgium

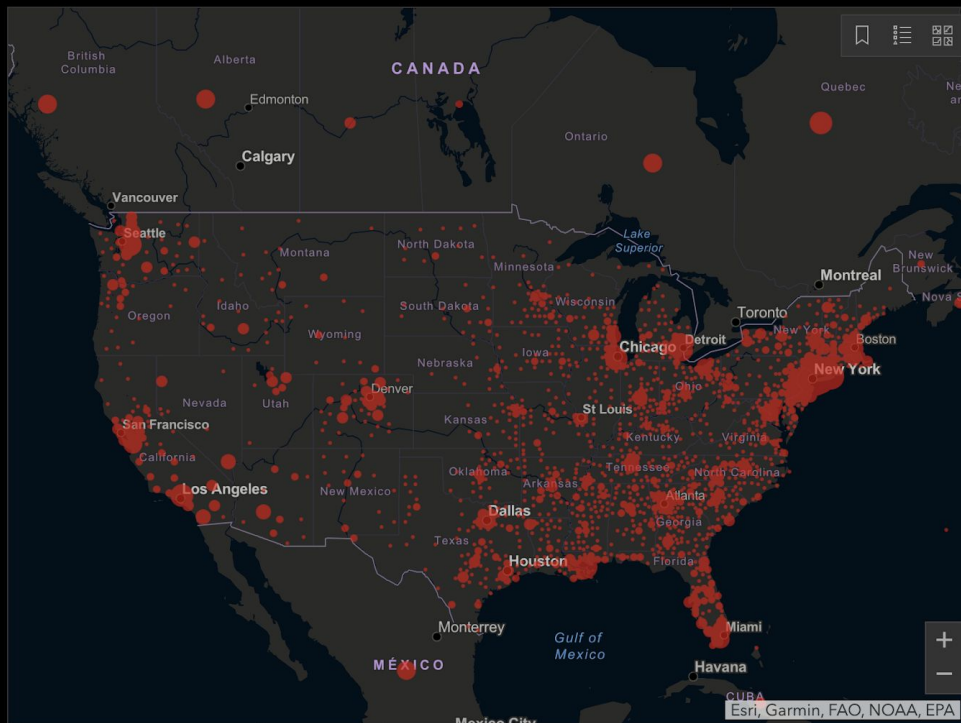
6,001 Austria

3,404 Canada

Admin1

Last Updated at (M/D/YYYY)

3/26/2020, 7:29:49 AM



Cumulative Confirmed Cases

Active Cases

175

countries/regions

Lancet Inf Dis Article: [Here](#). Mobile Version: [Here](#). Visualization: [JHU CSSE](#). Automation Support: [Esri Living Atlas team](#) and [JHU APL](#). Contact [US](#). [FAQ](#).
Data sources: WHO, CDC, ECDC, NHC, DXY, 1point3acres, Worldometers.info, BNO, state and national government health departments, and local media reports. Read more in [this blog](#).

Total Deaths

1,046

280 deaths
New York City **New York** US

100 deaths
King **Washington** US

44 deaths
Unassigned **New Jersey** US

37 deaths
Orleans **Louisiana** US

31 deaths
Unassigned **Georgia** US

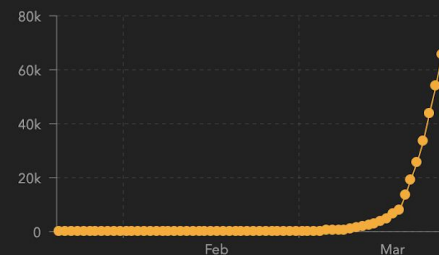
31 deaths
Unassigned **New York** US

21 deaths
Wayne **Michigan** US

Total Recovered

619

619 recovered
Recovered US

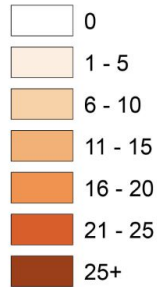


Confirmed

Daily Increase

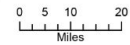
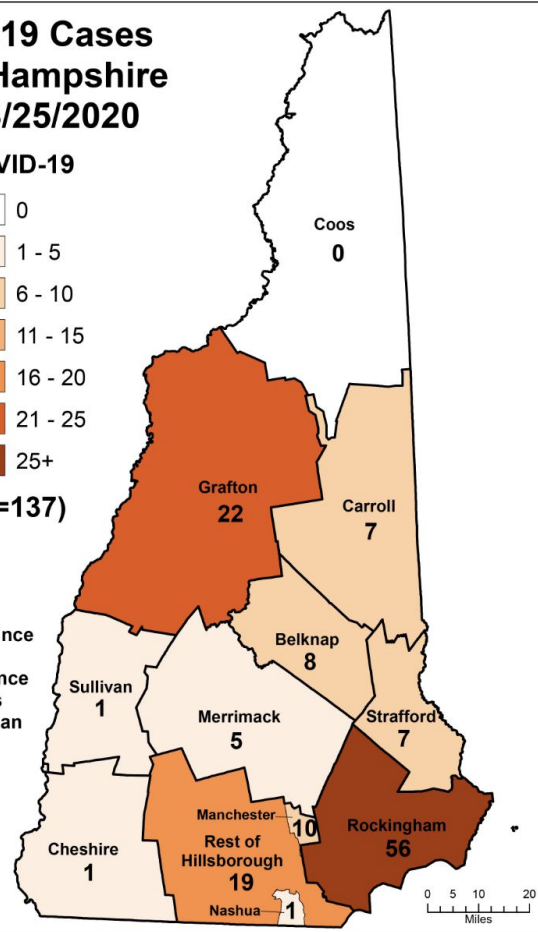
COVID-19 Cases in New Hampshire as of 3/25/2020

COVID-19



(N=137)

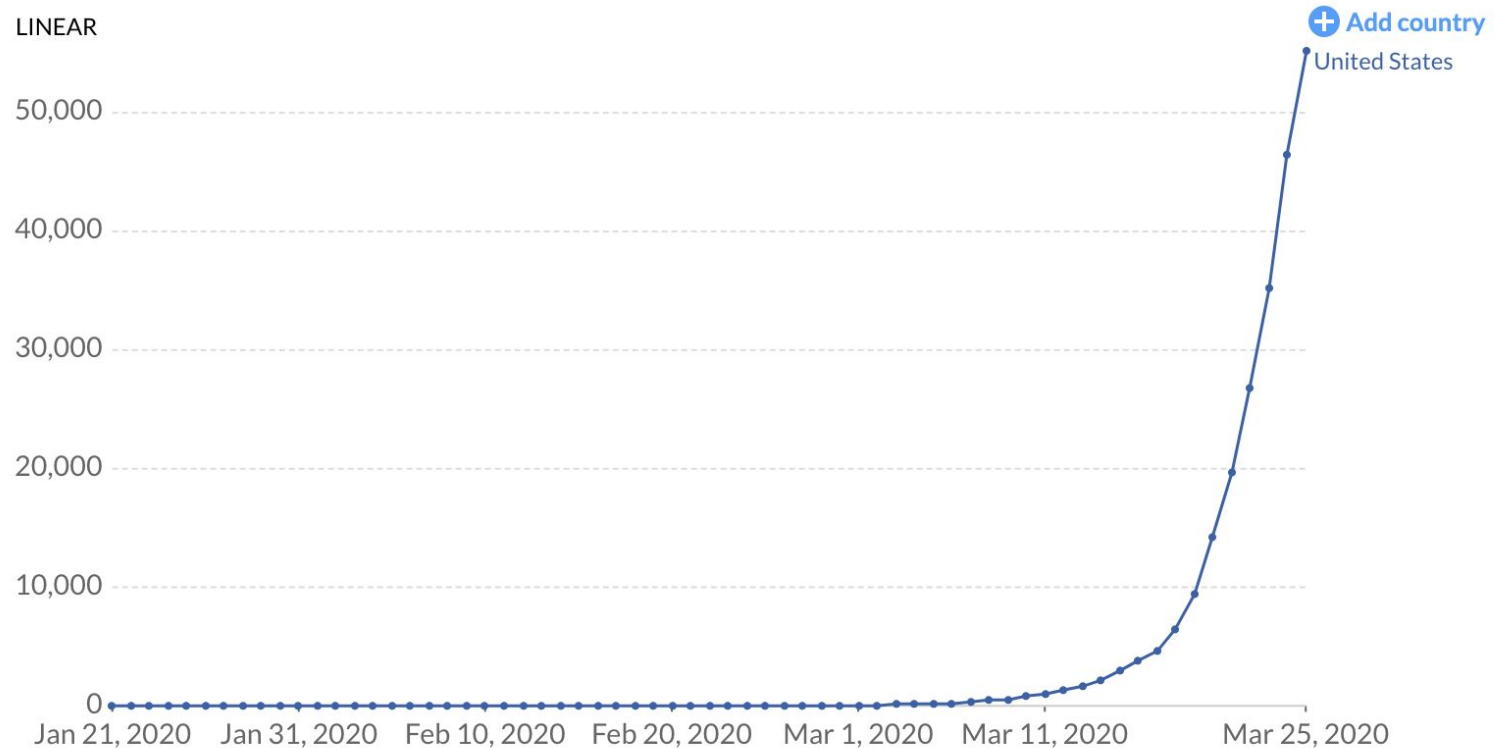
Note: We have since determined the county of residence for one case was Grafton rather than Coos county.



Total confirmed COVID-19 cases

The number of confirmed cases is lower than the number of total cases. The main reason for this is limited testing.

LINEAR



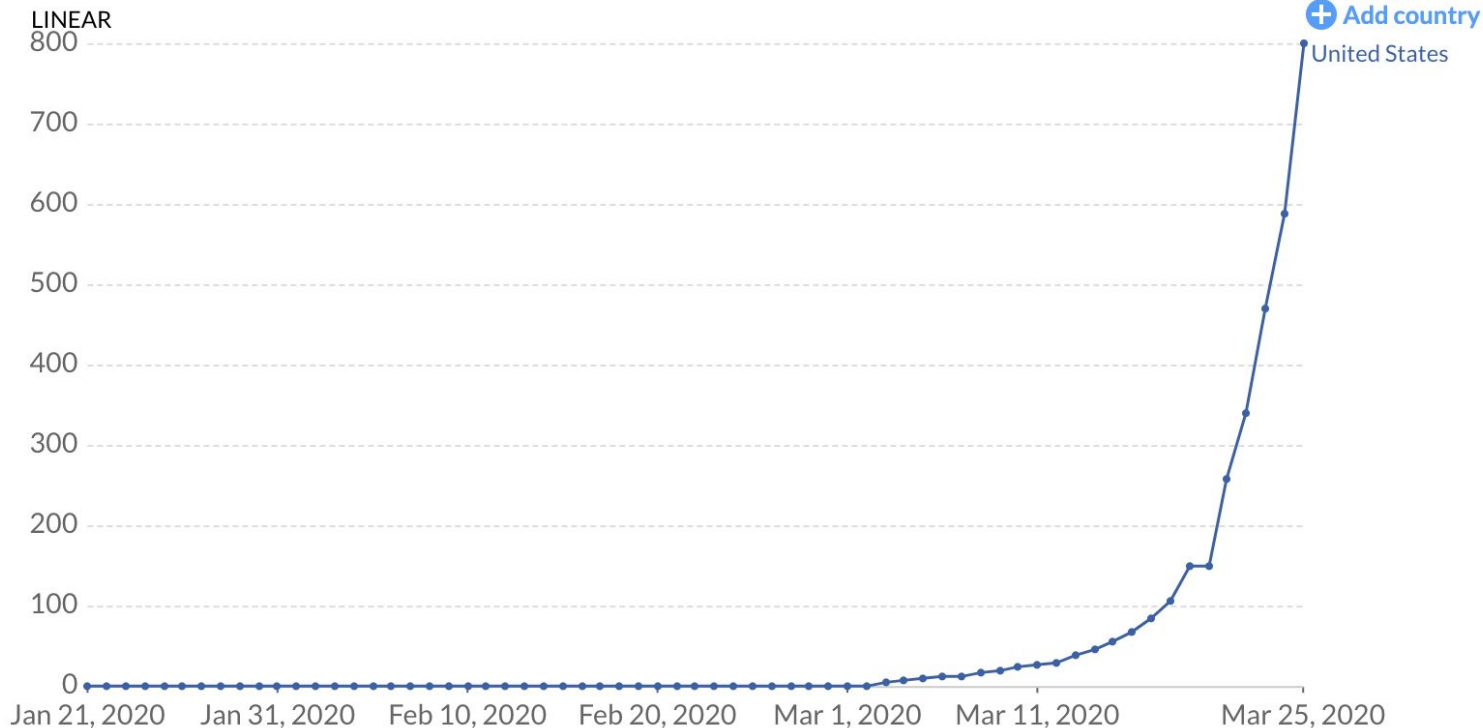
Source: European CDC - Latest Situation Update Worldwide

Note: The large increase in the number of cases globally and in China on Feb 13 is the result of a change in reporting methodology.

CC BY

Total confirmed deaths due to COVID-19

Limited testing and challenges in the attribution of the cause of death means that the number of confirmed deaths may not be an accurate count of the true number of deaths from COVID-19.

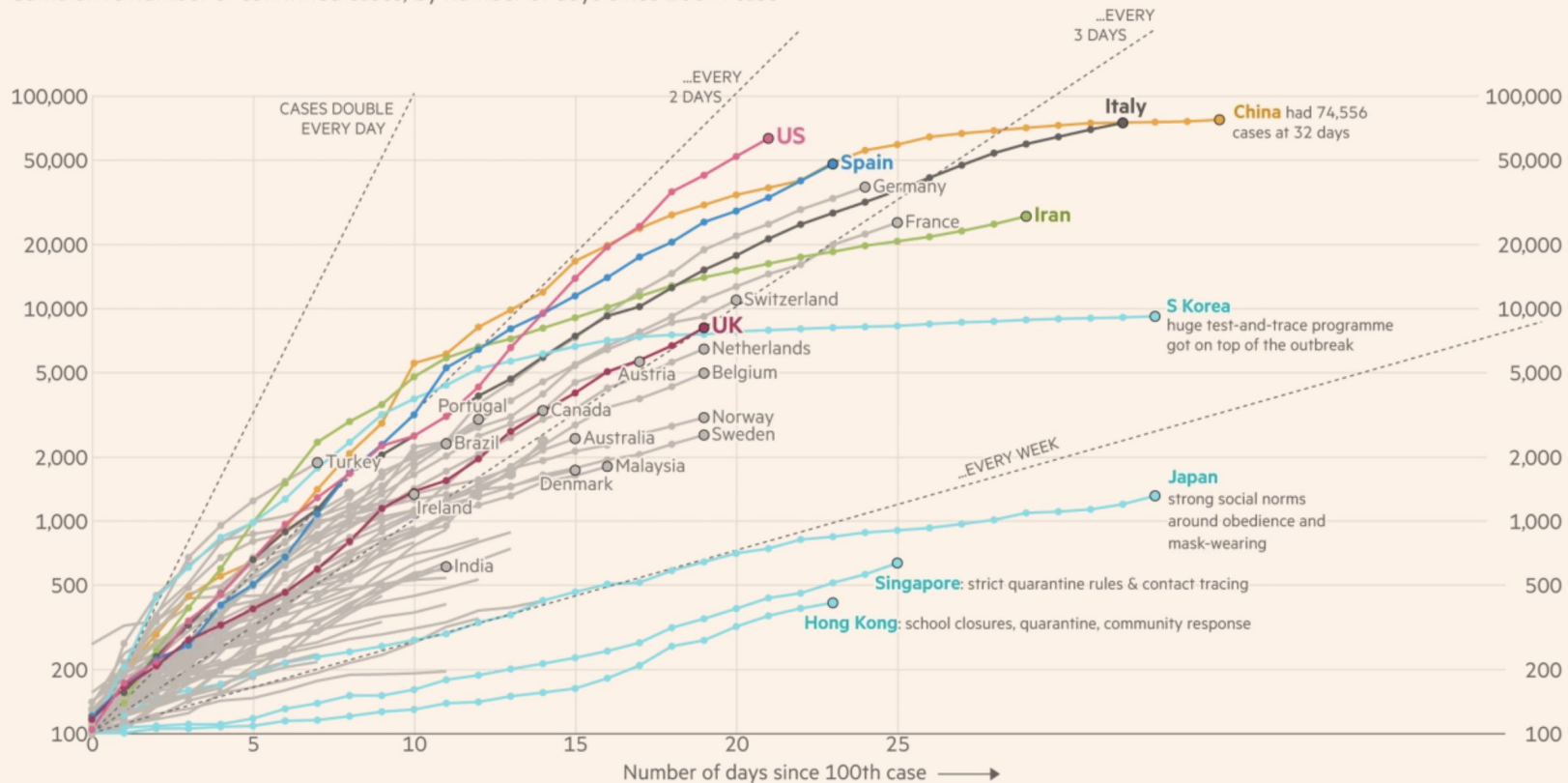


Source: European CDC – Latest Situation Update Worldwide

CC BY

Country by country: how coronavirus case trajectories compare

Cumulative number of confirmed cases, by number of days since 100th case



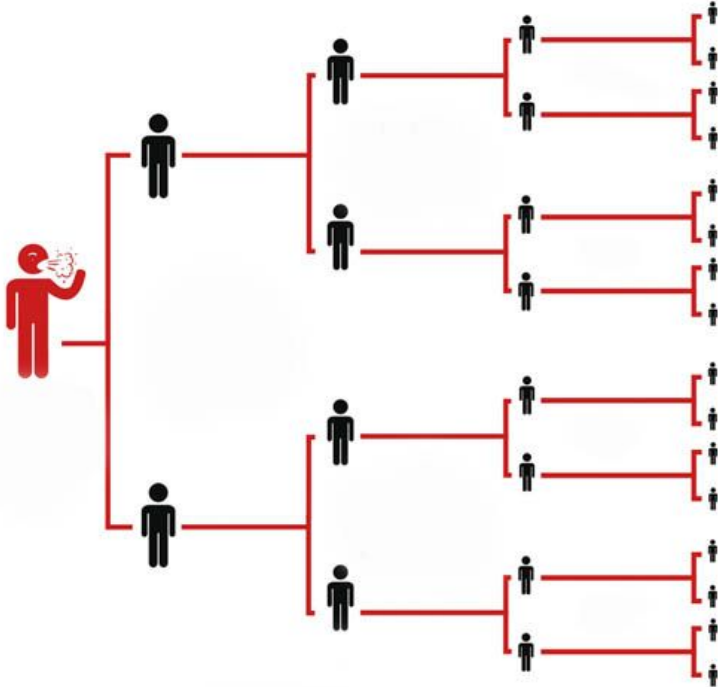
FT graphic: John Burn-Murdoch / @burnmurdoch

Source: FT analysis of Johns Hopkins University, CSSE; Worldometers; FT research. Data updated March 25, 19:00 GMT

© FT

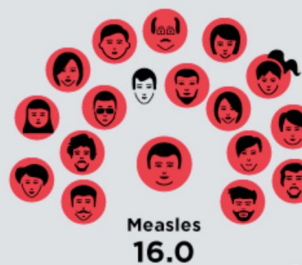
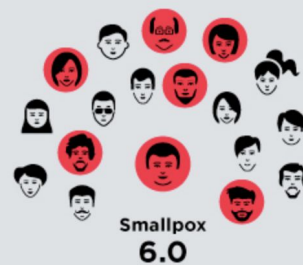
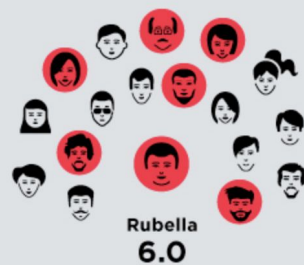
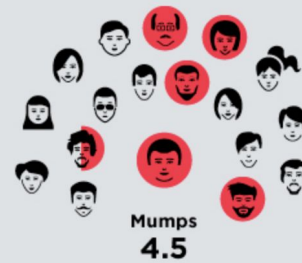
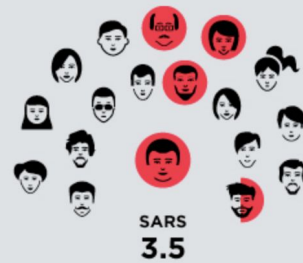
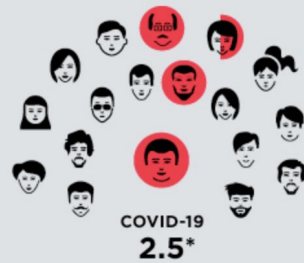
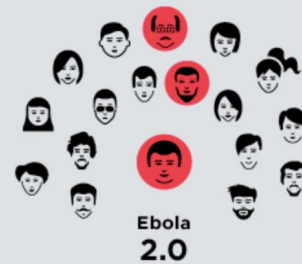
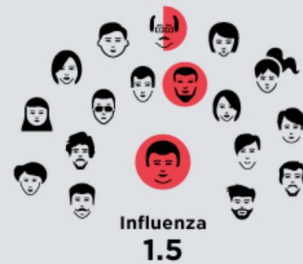
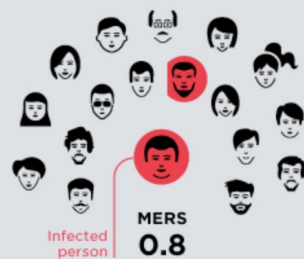
Public health response

Why social distancing is so important



R0 (basic reproduction number) of diseases

A measure of how many people each sick person will infect on average

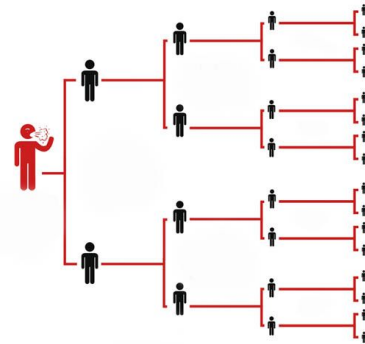


*This number may change as we learn more about this new disease



So what if I get infected? It's like the flu....

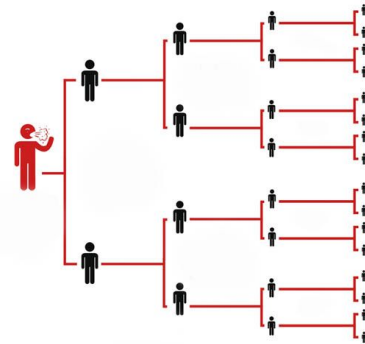
- 1 person with flu infects 1.5 → 10 transmissions later **58** infected
- 1 person with CoV infects 2.5 → 10 transmission later



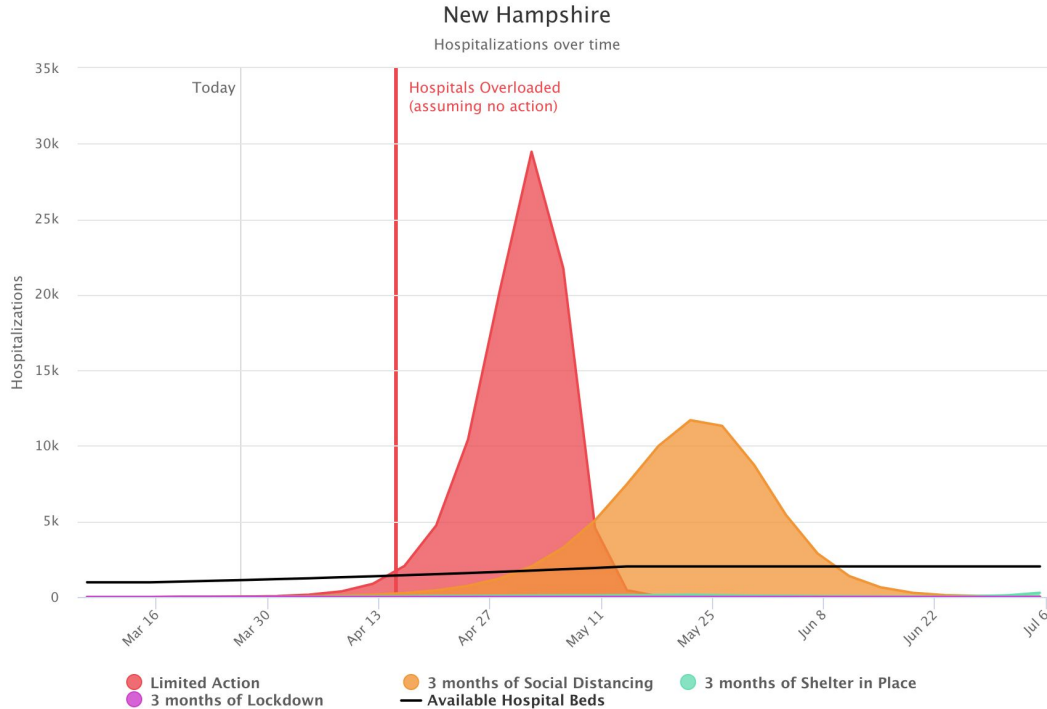
So what if I get infected? It's like the flu....

- 1 person with flu infects 1.5 → 10 transmissions later **58** infected
- 1 person with CoV infects 2.5 → 10 transmission later

9,537 infected



How long are we supposed to stay home?



Predicted Outcomes after 3 Months

Scenario	Estimated Cumulative Infected	Estimated Date Hospitals Overloaded	Estimated Deaths
No Action	>70%	Wed Apr 15 2020	27,000
3 Months of Social distancing*	>70%	Sat May 02 2020	20,000
3 Months of Shelter-in-place*	2%	outside time bound	<1000
3 Months of Wuhan-style Lockdown**	<1%	never	<1000

* A second spike in disease may occur after social distancing is stopped. Interventions are important because they buy time to create surge capacity in hospitals and develop therapeutic drugs that may have potential to lower hospitalization and fatality rates from COVID-19. [See full scenario definitions here.](#)

Why we need drug trials

- There is **NO** proven treatment for COVID-19
- Most drugs that work *in vitro* do not work *in vivo* or cause **harm**
- If we do not study them, we will not know what works
 - Ebola outbreak 30,000 infected, only 1 trial!
 - Many drugs given for COVID in China & Europe and not clear what works
- Repurposing drugs causes shortage for patients who need them
 - Hydroxychloroquine for lupus
- Most drugs have side effects
 - Arrhythmia for hydroxychloroquine

So what works?

- Healthful behavior boosts immune system
 - Rest
 - Balanced diet
 - Exercise
- Lung health
 - Do not smoke or vape
 - Wear respirator when working with dust, hay, concrete
- **No evidence** of vitamins, supplements, minerals

Care delivery

Recap

- **Telemedicine**
 - DEA and NH DHHS allow intakes
 - Refills via phone
 - Client can be at home
- **Prescriptions**
 - Communicate with pharmacies
 - Extend duration of prescriptions
 - Plan for buprenorphine shortage

Recap

- **HIPPA and 42 CFR part 2**
 - Rules relaxed
 - Can use SMS, FaceTime etc
 - Can make appointments, coordinate care
- **PDMP less lenient so far**

Considerations for people with SUD

Threats to people who use drugs

- **Risk to recovery**
 - Relapse
 - Overdose
- **High risk behavior**
 - Needle sharing
 - Sex work
- **Access to alcohol**
 - Liquor store closures and withdrawal

Threats to people who use drugs

- **Economic hardship**
 - Loss of income
 - Loss of business
 - No access to unemployment benefits
- **Household stressors**
 - Childcare
 - Intimate partner violence
 - Unable to visit sick, attend funerals
- **Lack of access to internet, running out of minutes**

FCC Connectivity Pledge

On Wednesday, March 13, FCC Chairman Ajit Pai launched the “Keep Americans Connected Pledge,” aimed at easing both financial and communication-related burdens on Americans caused by the unprecedented COVID-19 outbreak, and the subsequent social distancing measures that the state and federal governments have put in place.

For a period of at least 60 days, participating wireless and broadband providers have agreed to:

- Make their public Wi-Fi hotspots available and free to all Americans, regardless of which wireless carrier or broadband provider they subscribe to
- Waive all late payment fees for both individuals and small businesses resulting from the economic repercussions of COVID-19
- Continue providing service to residential and small business customers, regardless of their ability to pay their bills during the pandemic

Informational resources

The screenshot shows the ASAM website header with the logo and navigation menu. The main content area features a dark blue banner for "COVID-19 - RESOURCES". Below this is a teal banner with a coronavirus illustration and the text "COVID-19 CORONAVIRUS". A text block explains ASAM's role in developing clinical guidelines. A right-hand sidebar lists resources such as "Support Group", "Access to Telehealth", and "The ASAM Criteria".

ASAM American Society of Addiction Medicine

ADVOCACY EDUCATION MEMBERSHIP QUALITY & SCIENCE CME EVENTS

HOME / QUALITY & SCIENCE / COVID-19 CORONAVIRUS

COVID-19 - RESOURCES

COVID-19 CORONAVIRUS

As the leader in developing clinical guidelines and standards in addiction medicine, we take our responsibility very seriously. We realize that many providers and programs are trying to mitigate circumstances related to COVID-19. We have convened the ASAM Caring for Patients During the COVID-19 (CPDC) Task Force. The Task Force includes a national panel of experts that are recognized in the field of addiction medicine. They are rapidly producing comprehensive resources tailored to addiction medicine treatment within the context of the COVID-19 pandemic.

- COVID-19 Coronavirus
- Support Group
- Access to Telehealth
- Infection mitigation in outpatient settings
- National and State Guidance
- Taskforce
- Content Disclaimer
- The ASAM Criteria

Informational resources

SAMHSA
Substance Abuse and Mental Health
Services Administration

**TAKING CARE OF YOUR
BEHAVIORAL HEALTH**

**Tips For Social Distancing, Quarantine, And Isolation
During An Infectious Disease Outbreak**

Informational resources



[Donate Now](#)

[Blog](#)

[Action Center](#)

[About Us](#)

[Our Work](#)

[Issues](#)

[Our Resources](#)

[Get Involved](#)

Text AA 54

COVID-19 Guidance for People Who Use Drugs and Harm Reduction Programs

[Sign Up for Email](#)



Questions & Suggestions

<https://www.betterlifepartners.com/resources>

info@betterlifepartners.com